

Technical data sheet



Product features

Cooling cabinet 1400 l GN 2/1, stainless steel

Model	SAP Code	00006113
--------------	-----------------	----------



- GN / EN size in device: GN 2/1
- Chamber volume [l]: 1400
- Minimum device temperature [°C]: -2
- Maximum device temperature [°C]: 8
- Insulation thickness [mm]: 60
- Control type: Digital
- Interior lighting: No
- Door lock: No
- Annual energy consumption [kWh]: 1737

SAP Code	00006113	Gross Volume [m3]	2.650
Net Width [mm]	1388	Net Volume [m3]	2.302
Net Depth [mm]	826	Number of GN / EN	6
Net Height [mm]	2008	GN / EN size in device	GN 2/1
Net Weight [kg]	162.00	Minimum device temperature [°C]	-2
Power electric [kW]	0.325	Maximum device temperature [°C]	8
Loading	230 V / 1N - 50 Hz	Refrigerant	R290
Energy class	E	Climate class	4
Chamber volume [l]	1400		

Technical data sheet



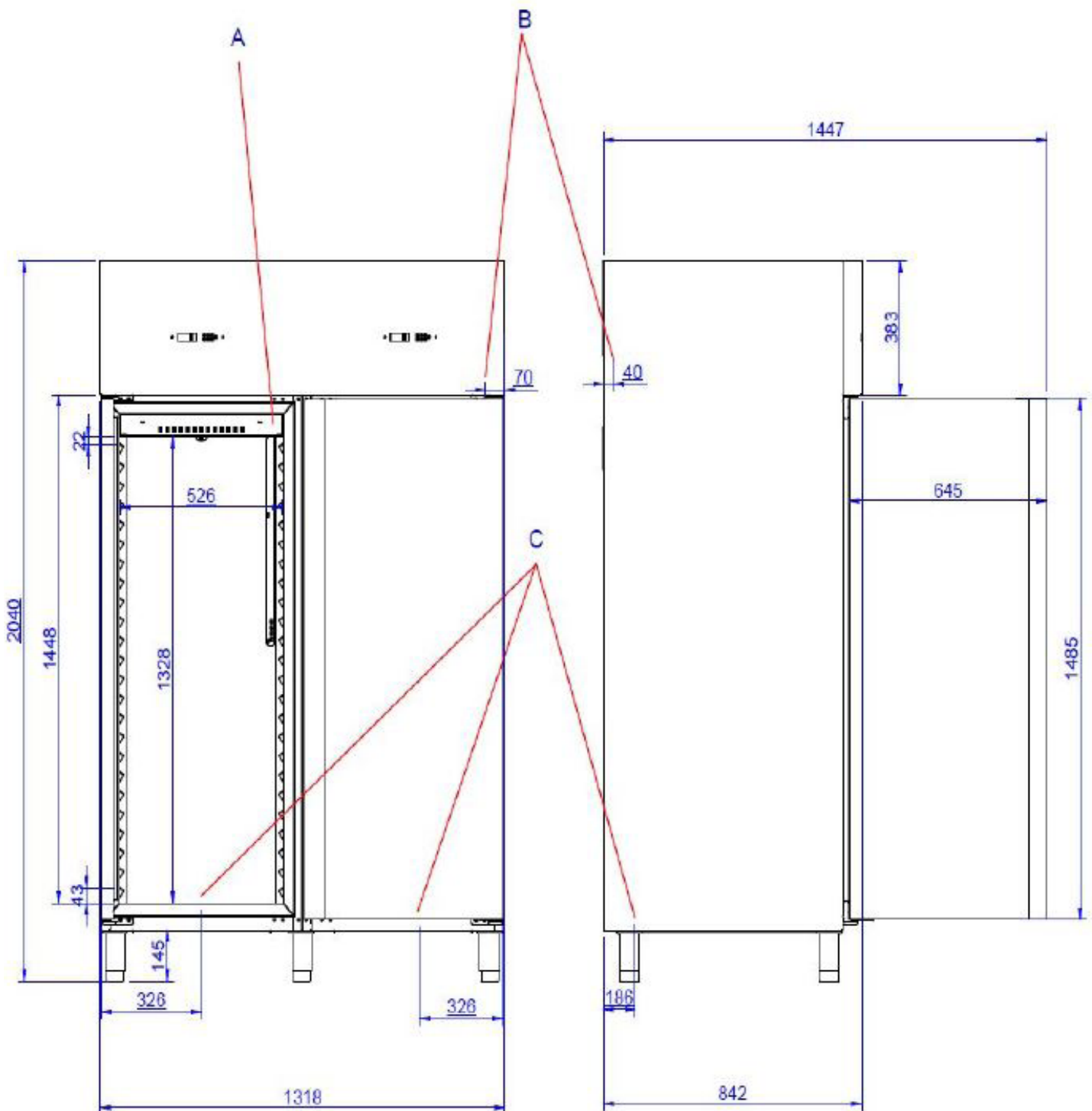
Technical drawing

Cooling cabinet 1400 l GN 2/1, stainless steel

Model

SAP Code

00006113



Technical data sheet



Product benefits

Cooling cabinet 1400 l GN 2/1, stainless steel

Model

SAP Code

00006113

1

Insulation 60mm

minimal heat loss

- saving electricity
- less wear and tear on the compressor due to less frequent switching

2

Two-sided opening

possibility to change the opening from the right to the left side

- greater variability of use

3

All-stainless design

outer shell

only stainless steel intended for food contact is used

good maintenance

zero contamination

resists even weaker acids

- long service life and high durability

4

Automatic defrosting

maintenance-free operation

continuous defrosting

- zero requirement for frost control by the operator

5

Height adjustable feet

maintenance-free operation

continuous defrosting

- precise positioning of the fridge in uneven floors, ensures correct operation of the unit thanks to the balance

Technical data sheet



Technical parameters

Cooling cabinet 1400 l GN 2/1, stainless steel

Model

SAP Code

00006113

1. SAP Code:

00006113

2. Net Width [mm]:

1388

3. Net Depth [mm]:

826

4. Net Height [mm]:

2008

5. Net Weight [kg]:

162.00

6. Gross Width [mm]:

1450

7. Gross depth [mm]:

850

8. Gross Height [mm]:

2150

9. Gross Weight [kg]:

206.00

10. Device type:

Electric unit

11. Power electric [kW]:

0.325

12. Loading:

230 V / 1N - 50 Hz

13. Energy class:

E

14. Refrigerant:

R290

15. Cooling type:

Dinamic

16. Material:

Stainless steel

17. Min ambient temperature [°C]:

10

18. Max ambient temperature [°C]:

43

19. Device properties 2:

Cooling

20. GN / EN size in device:

GN 2/1

21. Number of GN / EN:

6

22. Chamber volume [l]:

1400

23. Gross Volume [m3]:

2.650

24. Net Volume [m3]:

2.302

25. Adjustable feet:

Yes

26. Insulation thickness [mm]:

60

27. Number of doors:

2

28. Unit:

Yes

Technical data sheet



Technical parameters

Cooling cabinet 1400 l GN 2/1, stainless steel

Model

SAP Code

00006113

29. Control type:

Digital

34. Maximum device temperature [°C]:

8

30. Door lock:

No

35. Thaving cycle:

Yes

31. Interior lighting:

No

36. Number of grids:

6

32. Annual energy consumption [kWh]:

1737

37. Climate class:

4

33. Minimum device temperature [°C]:

-2

38. Cross-section of conductors CU [mm²]:

0,5

- Výkon (kW): 2,4-3,3 (230 V)